

## Items Supplied >

1 – FRONT EXHAUST ASSEMBLY  
1 – REAR EXHAUST ASSEMBLY  
6 – HOSE CLAMPS  
1 – BRACKET, BRAKE RESERVOIR  
4 – BOLT, HEX 5/16-18 x .63  
2 – SLIDER BRACKETS  
2 – NUT, M6 NYLOCK  
2 – NUT, M10 FINE THREAD HEX  
1 – 3/8 WASHER

## Application(s) >

YAMAHA WARRIOR 02-UP

## Instruction Manual >

2672SC

Page 1 of 2

**PRIOR TO INSTALLATION, MAKE SURE YOUR STOCK HEADPIPE GASKETS ARE IN GOOD SHAPE. IF YOU HAVE ANY DOUBTS AS TO THEIR CONDITION, REPLACE THEM.**

**Read all instructions carefully and completely before installing your new exhaust system**

1. Remove the stock exhaust system and lower exhaust mounting bracket saving all bolts removed.
2. Remove the stock upper muffler bracket by first removing the two bolts that hold the rear brake reservoir to the stock muffler bracket then remove the two M10 button head bolts from where the bracket contacts the frame. Set the four bolts aside for future reassembly.
3. Install the supplied brake reservoir bracket where the stock upper muffler bracket was located using the stock M10 bolts and the supplied M10 nuts. See figure 1 for bracket orientation.
4. Mount the rear brake reservoir between the bracket and wheel using the stock bolts and supplied M6 nuts. (See figure 1)
5. Mount the supplied exhaust mount to the motorcycle with curved side up using the stock bolts making sure to place the supplied washer between the bracket and frame aligning it with the rear hole, do not tighten completely. (See fig 1)
6. Remove front muffler and heatshield assembly from box. Loosen right front foot peg assembly to help provide installation clearance for pipe. Slide front head pipe with heat shield through footpeg assembly and bolt to cylinder using stock nuts. Do not tighten.
7. Place a (supplied 2 hole) slider bracket inside the muffler bracket and bolt into place using the supplied 5/16" bolts but do not tighten.
8. Remove rear muffler and heatshield assembly from box and install onto bike using stock cylinder bolts, supplied 2 hole slider bracket and supplied 5/16" bolts. Do not tighten.
9. Make sure the system is properly aligned and the heatshields are parallel. Tighten headpipe cylinder bolts making sure to tighten evenly.
10. Tighten the muffler mounting bracket to the frame, then mufflers to the muffler mounting bracket.
11. Your Cobra Engineering exhaust is mostly pre-assembled for your convenience. Although the heatshields and tips are in place, they will need to be tightened. The tips will rotate slightly for adjustment. Make sure the tips are aligned on the same plane with each other then using a 7/16" wrench on nut inside the pipe and allen wrench on the outside tighten both tips in place.
12. Minimize the gap between the heatshields and tips and tighten heatshields making sure that clamps are not visible.
13. Tighten the footpeg assembly and all hardware to factory specs to make sure that it is tight.

*\* Cobra recommends you always wear a helmet while riding. Please never operate your motorcycle while under the influence of alcohol and/or drugs. Enjoy the new look of your motorcycle and please ride safely.*

**Important:** It is recommended that you install a Cobra Fi2000 Digital Fuel Processor with your Cobra exhaust system (part# 92-0772). Cobra is not responsible for the performance of any other fuel management system used with Cobra exhaust systems.

**Before starting your engine remove all fingerprints from chrome with a quality wax or chrome polish. Failure to do so can cause discoloration. Due to fluctuations in fuel injection settings, timing, etc., Cobra Engineering does not warrant against chrome discoloration.**

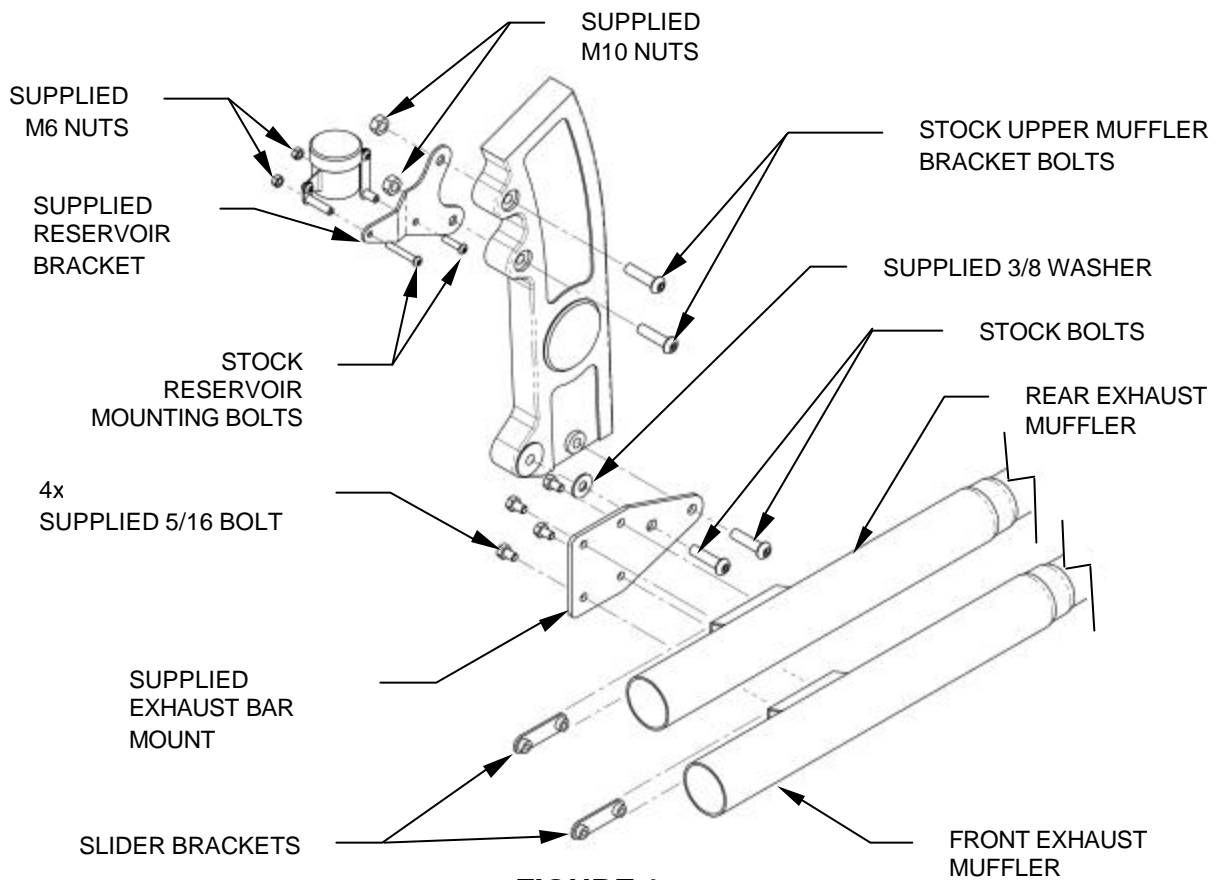


FIGURE 1

